



ST



STR



STT



CAST

# ST STR STT CA-ST

**ST, STR:** Single-inlet, belt-driven centrifugal fans with axis outlet and impeller with forward-facing blades

**CAST:** Soundproof ventilation units with forward-facing blades, fitted with ST series fans on rubber dampers

Fan:

- Galvanized sheet steel casing
- Impeller with forward-facing blades made from galvanized sheet steel
- Galvanized sheet steel structure with thermal insulation and sound-proofing (CAST)
- Stuffing-box for cable input (CAST)

On request:

- Different outlet positions
- Special windings for different voltages
- With two speed motors

**STT:** Single-inlet, belt-driven centrifugal fans with electric motor, pulley, belt kit and standardised protectors and impeller with backward-facing blades.

Motor:

- Motors with IE-2 efficiency, except for motors with lower powers than 0.75 kW, monophase motors or two-speed motors
- Class F motors with ball bearings, IP55 protection
- Max. temperature of air for transport: -20°C. +60°C.

Finish:

- Anticorrosive galvanized sheet steel.

## Technical characteristics

Model	Speed		Installed Power		Maximum Airflow		Air temperature		Approx. weight (kg)
	Máx. (r/min)		Máx. (kW)		(m³/h)		(°C) min. máx.		
ST-9/4	2400		2		3500		-20 85	9,6	
ST-10/5	2200		3		5600		-20 85	11	
ST-12/6	1500		2,2		4800		-20 85	17,5	
ST-15/7	1050		3		7400		-20 85	22,5	
ST-18/9	920		4		10500		-20 85	33	
STR 9/4	2400		2		3500		-20 85	9,6	
STR 10/5	2200		3		5600		-20 85	11	
STR STR-F400 12/6	1500		2,2		4800		-20 85	17,5	
STR STR-F400 15/7	1050		3		7400		-20 85	22,5	
STR STR-F400 18/9	920		4		10500		-20 85	33	
STR STR-F400 20/10	850		5,5		15000		-20 85	71	
STR STR-F400 22/11	1000		18,5		26000		-20 85	80	
STR STR-F400 25/13	810		18,5		32000		-20 85	93	
STR STR-F400 30/14	600		18,5		38000		-20 85	125	

## Technical characteristics

Model	Speed (r/min)	Maximum admissible current			Installed Power (kW)	Maximum Airflow (m <sup>3</sup> /h)	Sound pressure level dB(A)	Approx. weight (kg)
		230V (A)	400V	690V				
STT CA-ST 9/4-0'25	970	0,80	0,45		0,18	1450	69	59
STT CA-ST 9/4-0'33	1080	1,10	0,65		0,25	1600	71	62
STT CA-ST 9/4-0'5	1230	1,60	0,90		0,37	1800	74	62
STT CA-ST 9/4-0'75	1400	2,40	1,40		0,55	2050	77	65
STT CA-ST 10/5-0'5	900	1,60	0,90		0,37	2300	69	63
STT CA-ST 10/5-0'75	1030	2,40	1,40		0,55	2650	72	66
STT CA-ST 10/5-1	1150	3,30	1,90		0,75	2950	74	67
STT CA-ST 10/5-1'5	1300	4,50	2,60		1,1	3300	77	70
STT CA-ST 10/5-2	1430	6,00	3,50		1,5	3650	79	73
STT CA-ST 12/6-0,75	1000	2,4	1,4		0,55	2600	69	73
STT CA-ST 12/6-1	1100	3,3	1,9		0,75	3100	71	74
STT CA-ST 12/6-1,5	1250	4,5	2,6		1,1	3500	74	77
STT CA-ST 12/6-2	1300	6,0	3,5		1,5	4250	77	80
STT CA-ST 12/6-3	1500	8,3	4,8		2,2	4800	79	85
STT CA-ST 15/7-1	800	3,3	1,9		0,75	4000	67	92
STT CA-ST 15/7-1,5	850	4,5	2,6		1,1	4800	69	95
STT CA-ST 15/7-2	920	6,0	3,5		1,5	5400	72	98
STT CA-ST 15/7-3	1000	8,3	4,8		2,2	6400	75	103
STT CA-ST 15/7-4	1050	11,2	6,5		3	7400	77	106
STT CA-ST 18/9-1,5	750	4,5	2,6		1,1	5800	68	111
STT CA-ST 18/9-2	790	6,0	3,5		1,5	6600	70	114
STT CA-ST 18/9-3	800	8,3	4,8		2,2	8200	74	119
STT CA-ST 18/9-4	850	11,2	6,5		3	9000	76	122
STT CA-ST 18/9-5,5	920	14,9	8,6		4	10500	78	125
STT CA-ST 20/10-2	650	6,0	3,5		1,5	8100	65	203
STT CA-ST 20/10-3	690	8,3	4,8		2,2	10100	68	208
STT CA-ST 20/10-4	750	11,2	6,5		3	11500	70	211
STT CA-ST 20/10-5,5	790	14,9	8,6		4	13100	73	214
STT CA-ST 20/10-7,5	850		11,1	6,4	5,5	15000	75	227
STT CA-ST 22/11-3	580	8,3	4,8		2,2	11200	67	219
STT CA-ST 22/11-4	610	11,2	6,5		3	13000	70	222
STT CA-ST 22/11-5,5	650	14,9	8,6		4	15000	72	225
STT CA-ST 22/11-7,5	690		11,1	6,4	5,5	17000	74	238
STT CA-ST 22/11-10	750		14,8	8,5	7,5	19000	76	246
STT CA-ST 22/11-12,5	790		17,8	10,3	9,2	21000	78	257
STT CA-ST 22/11-15	830		21,5	12,4	11	22000	79	273
STT CA-ST 22/11-20	910		28,5	16,5	15	24500	81	292
STT CA-ST 22/11-25	1000		35,0	20,2	18,5	26000	83	322
STT CA-ST 25/13-4	520	11,2	6,5		3	14000	62	254
STT CA-ST 25/13-5,5	550	14,9	8,6		4	17000	65	257
STT CA-ST 25/13-7,5	590		11,1	6,4	5,5	19500	67	270
STT CA-ST 25/13-10	620		14,8	8,5	7,5	23000	70	278
STT CA-ST 25/13-12,5	650		17,8	10,3	9,2	25000	72	289
STT CA-ST 25/13-15	690		21,5	12,4	11	26500	74	305
STT CA-ST 25/13-20	750		28,5	16,5	15	29500	75	324
STT CA-ST 25/13-25	810		35,0	20,2	18,5	32000	77	354
STT CA-ST 30/14-5,5	400	14,9	8,6		4	21000	69	331
STT CA-ST 30/14-7,5	425		11,1	6,4	5,5	24000	72	344
STT CA-ST 30/14-10	460		14,8	8,5	7,5	27500	74	352
STT CA-ST 30/14-12,5	480		17,8	10,3	9,2	30000	76	363
STT CA-ST 30/14-15	500		21,5	12,4	11	33000	77	379
STT CA-ST 30/14-20	550		28,5	16,5	15	36500	78	398
STT CA-ST 30/14-25	600		35,0	20,2	18,5	38000	81	428

DECORATIVE FANS

WALL MOUNTED FANS

DUCT FANS

DIDW FANS

SISW FANS

ROOF TOP FANS

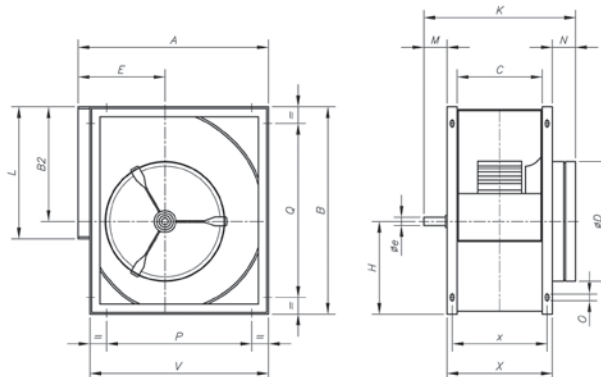
AXIAL IN LINE FANS

SOMKE FANS

ACCESSORIES

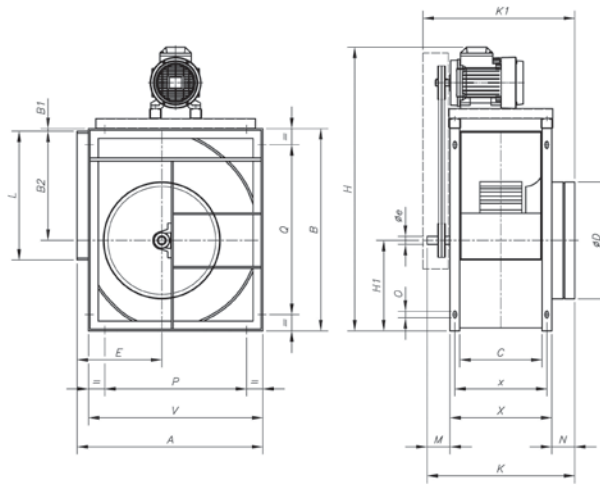
Dimensions in mm

ST



	A	B	B2	C	øD	E	øe	H	K	L	M	N	O	P	Q	V	X	x
ST-9/4	388	402	218	169	270	183	20	184	361	263	42	90	9x17	214	214	358	229	201
ST-10/5	428	450	246	182	290	202	20	204	374	292	42	90	9x17	254	254	398	242	214
ST-12/6	498	532	290	210	325	230	25	242	435	345	75	90	9x17	324	324	468	270	242
ST-15/7	583	632	348	269	400	265	25	284	494	404	75	90	9x17	406	406	553	329	301
ST-18/9	694	756	415	301	475	323	25	341	526	482	75	90	9x17	520	608	664	361	333

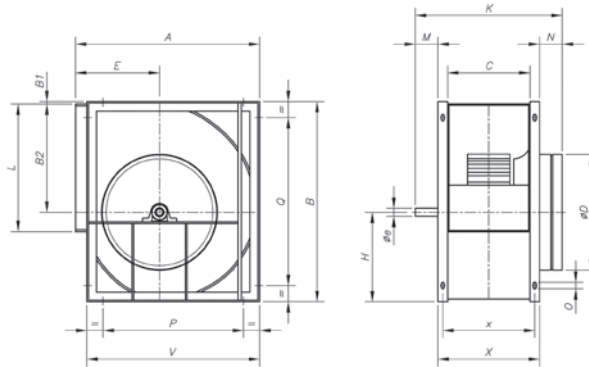
ST



	A	B	B1	B2	C	øD	E	øe	H	H1	K	K1	L	M	N	O	P	Q	V	X	x
ST-20/10-2	843	963	35	523	330	575	375	35	1255	440	620	670	603	100	110	9x17	646	811	798	410	370
ST-20/10-3	843	963	35	523	330	575	375	35	1275	440	620	670	603	100	110	9x17	646	811	798	410	370
ST-20/10-4	843	963	35	523	330	575	375	35	1275	440	620	670	603	100	110	9x17	646	811	798	410	370
ST-20/10-5'5	843	963	35	523	330	575	375	35	1300	440	620	670	603	100	110	9x17	646	811	798	410	370
ST-20/10-7'5	843	963	35	523	330	575	375	35	1340	440	620	670	603	100	110	9x17	646	811	798	410	370
ST-22/11-3	913	1046	35	569	358	615	400	35	1355	477	648	700	693	100	110	9x17	716	894	868	438	398
ST-22/11-4	913	1046	35	569	358	615	400	35	1355	477	648	700	693	100	110	9x17	716	894	868	438	398
ST-22/11-5'5	913	1046	35	569	358	615	400	35	1280	477	648	700	693	100	110	9x17	716	894	868	438	398
ST-22/11-7'5	913	1046	35	569	358	615	400	35	1420	477	648	700	693	100	110	9x17	716	894	868	438	398
ST-22/11-10	913	1046	35	569	358	615	400	35	1420	477	648	700	693	100	110	9x17	716	894	868	438	398
ST-22/11-12'5	913	1046	35	569	358	615	400	35	1420	477	648	700	693	100	110	9x17	716	894	868	438	398
ST-22/11-15	913	1046	35	569	358	615	400	35	1480	477	648	700	693	100	110	9x17	716	894	868	438	398
ST-22/11-20	913	1046	35	569	358	615	400	35	1480	477	648	700	693	100	110	9x17	716	894	868	438	398
ST-22/11-25	913	1046	35	569	358	615	400	35	1565	477	648	700	693	100	110	9x17	716	894	868	438	398
ST-25/13-4	998	1161	35	642	412	695	423	35	1470	519	701	750	793	100	110	9x17	801	1009	953	492	452
ST-25/13-5'5	998	1161	35	642	412	695	423	35	1495	519	701	750	793	100	110	9x17	801	1009	953	492	452
ST-25/13-7'5	998	1161	35	642	412	695	423	35	1540	519	701	750	793	100	110	9x17	801	1009	953	492	452
ST-25/13-10	998	1161	35	642	412	695	423	35	1540	519	701	750	793	100	110	9x17	801	1009	953	492	452
ST-25/13-12'5	998	1161	35	642	412	695	423	35	1540	519	701	750	793	100	110	9x17	801	1009	953	492	452
ST-25/13-15	998	1161	35	642	412	695	423	35	1565	519	701	750	793	100	110	9x17	801	1009	953	492	452
ST-25/13-20	998	1161	35	642	412	695	423	35	1565	519	701	750	793	100	110	9x17	801	1009	953	492	452
ST-25/13-25	998	1161	35	642	412	695	423	35	1680	519	701	750	793	100	110	9x17	801	1009	953	492	452
ST-30/14-5'5	1206	1400	35	776	474	835	515	40	1735	624	764	815	933	100	110	9x17	1009	1248	1161	554	514
ST-30/14-7'5	1206	1400	35	776	474	835	515	40	1775	624	764	815	933	100	110	9x17	1009	1248	1161	554	514
ST-30/14-10	1206	1400	35	776	474	835	515	40	1775	624	764	815	933	100	110	9x17	1009	1248	1161	554	514
ST-30/14-12'5	1206	1400	35	776	474	835	515	40	1775	624	764	815	933	100	110	9x17	1009	1248	1161	554	514
ST-30/14-15	1206	1400	35	776	474	835	515	40	1835	624	764	815	933	100	110	9x17	1009	1248	1161	554	514
ST-30/14-20	1206	1400	35	776	474	835	515	40	1835	624	764	815	933	100	110	9x17	1009	1248	1161	554	514
ST-30/14-25	1206	1400	35	776	474	835	515	40	1925	624	764	815	933	100	110	9x17	1009	1248	1161	554	514

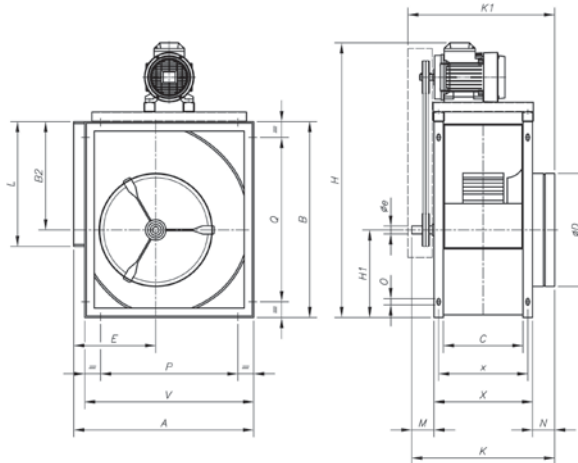
**Dimensions in mm**

**STR  
STR-F400**



	A	B	B1	B2	C	øD	E	øe	H	K	L	M	N	O	P	Q	V	X	x	
STR	9/4	388	402	-	218	169	270	183	20	184	361	263	42	90	9x17	24	214	358	229	201
STR	10/5	428	450	-	246	182	290	202	20	204	374	292	42	90	9x17	254	254	398	242	214
STR STR-F400	12/6	498	532	-	290	210	325	230	25	242	435	345	75	90	9x17	324	324	468	270	242
STR STR-F400	15/7	583	632	-	348	269	400	365	25	284	494	404	75	90	9x17	406	406	553	329	301
STR STR-F400	18/9	694	756	-	415	301	475	323	25	341	526	482	75	90	9x17	520	608	664	361	333
STR STR-F400	20/10	843	963	35	523	330	575	375	35	440	620	603	100	110	9x17	646	811	798	410	370
STR STR-F400	22/11	913	1046	35	569	358	615	400	35	477	648	693	100	110	9x17	716	894	868	438	398
STR STR-F400	25/13	998	1161	35	642	412	695	423	35	519	701	793	100	110	9x17	801	1009	953	492	452
STR STR-F400	30/14	1206	1400	35	776	474	835	515	40	624	764	933	100	110	9x17	1009	1248	1161	554	514

**STT**

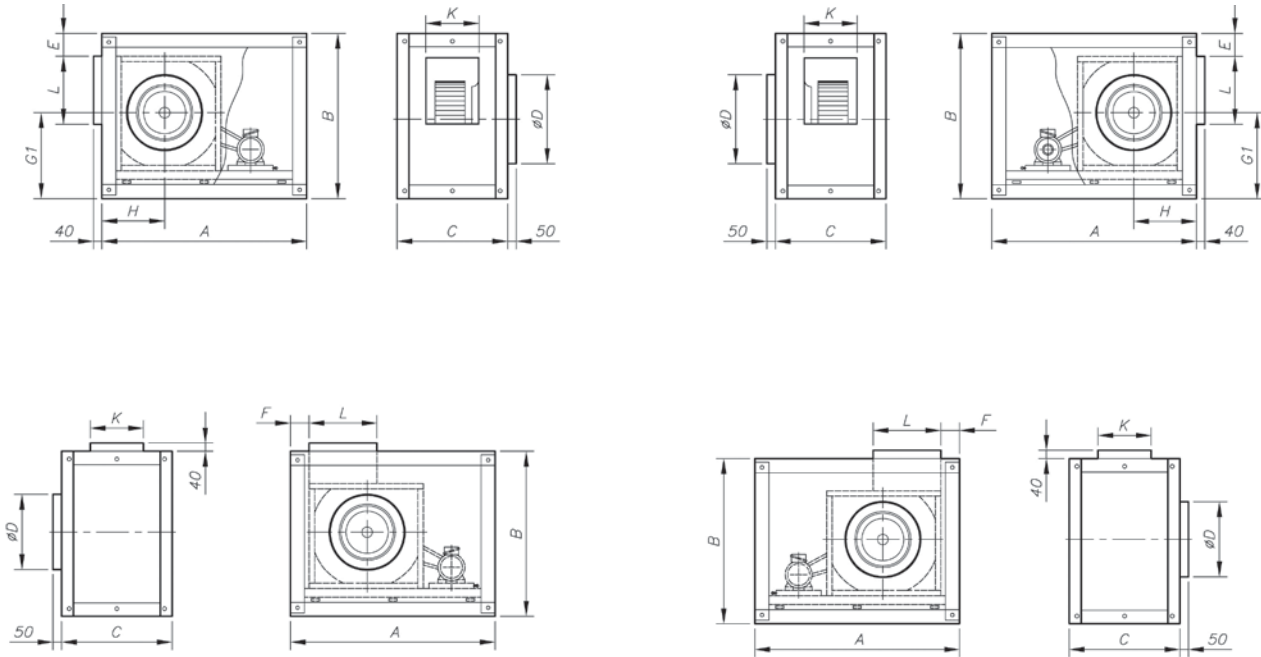


	A	B	B2	C	øD	E	øe	H	H1	K	K1	L	M	N	O	P	Q	V	X	x
STT-9/4-0'25	388	402	218	169	270	183	20	636	184	361	405	263	42	90	9x17	214	214	358	229	201
STT-9/4-0'33	388	402	218	169	270	183	20	654	184	361	405	263	42	90	9x18	214	214	358	229	201
STT-9/4-0'5	388	402	218	169	270	183	20	654	184	361	405	263	42	90	9x19	214	214	358	229	201
STT-9/4-0'75	388	402	218	169	270	183	20	672	184	361	405	263	42	90	9x20	214	214	358	229	201
STT-10/5-0'5	428	450	246	182	290	202	20	705	204	374	415	292	42	90	9x17	254	254	398	242	214
STT-10/5-0'75	428	450	246	182	290	202	20	725	204	374	415	292	42	90	9x18	254	254	398	242	214
STT-10/5-1	428	450	246	182	290	202	20	725	204	374	415	292	42	90	9x19	254	254	398	242	214
STT-10/5-1'5	428	450	246	182	290	202	20	740	204	374	415	292	42	90	9x20	254	254	398	242	214
STT-10/5-2	428	450	246	182	290	202	20	740	204	374	415	292	42	90	9x21	254	254	398	242	214
STT-12/6-0'75	498	532	290	210	325	230	25	805	242	435	475	345	75	90	9x17	324	324	468	270	242
STT-12/6-1	498	532	290	210	325	230	25	805	242	435	475	345	75	90	9x17	324	324	468	270	242
STT-12/6-1'5	498	532	290	210	325	230	25	825	242	435	475	345	75	90	9x17	324	324	468	270	242
STT-12/6-2	498	532	290	210	325	230	25	825	242	435	475	345	75	90	9x17	324	324	468	270	242
STT-12/6-3	498	532	290	210	325	230	25	845	242	435	475	345	75	90	9x17	324	324	468	270	242
STT-15/7-1	583	632	348	269	400	265	25	905	284	494	535	404	75	90	9x17	406	406	553	329	301
STT-15/7-1'5	583	632	348	269	400	265	25	925	284	494	535	404	75	90	9x17	406	406	553	329	301
STT-15/7-2	583	632	348	269	400	265	25	925	284	494	535	404	75	90	9x17	406	406	553	329	301
STT-15/7-3	583	632	348	269	400	265	25	945	284	494	535	404	75	90	9x17	406	406	553	329	301
STT-15/7-4	583	632	348	269	400	265	25	945	284	494	535	404	75	90	9x17	406	406	553	329	301
STT-18/9-1'5	694	756	415	301	475	323	25	1050	341	526	566	482	75	90	9x17	520	608	664	361	333
STT-18/9-2	694	756	415	301	475	323	25	1050	341	526	566	482	75	90	9x17	520	608	664	361	333
STT-18/9-3	694	756	415	301	475	323	25	1070	341	526	566	482	75	90	9x17	520	608	664	361	333
STT-18/9-4	694	756	415	301	475	323	25	1070	341	526	566	482	75	90	9x17	520	608	664	361	333
STT-18/9-5'5	694	756	415	301	475	323	25	1095	341	526	566	482	75	90	9x17	520	608	664	361	333

### Dimensions in mm

#### CA-ST

Standard supply horizontal outlet (H) RD-90

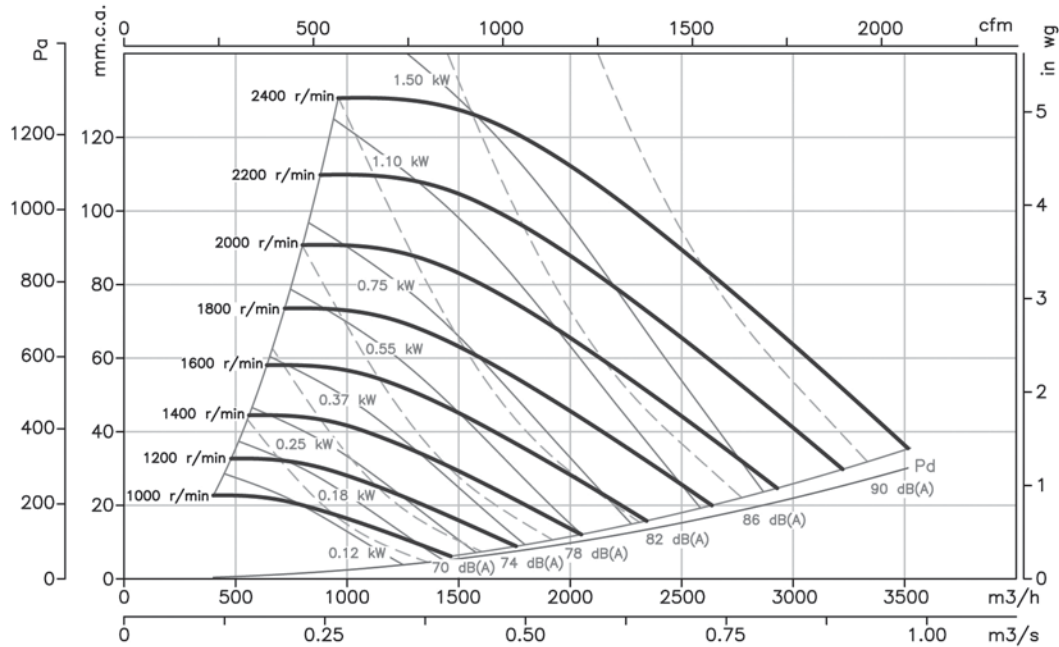


	A	B	C	ØD	≤10CV >10CV		F	≤10CV >10CV		≤10CV >10CV			K
					E	E		G1	G1	H	L	L	
CA-ST-9/4-H	700	522	500	275	74	-	-	228	-	246	268	-	170
CA-ST-9/4-V	700	522	500	275	-	-	30	258	-	258	268	-	170
CA-ST-10/5/7-H	750	575	515	290	74	-	-	248	-	273	296	-	185
CA-ST-10/5-V	750	575	515	290	-	-	30	263	-	263	296	-	185
CA-ST-12/6-H	850	650	540	330	74	-	-	288	-	288	346	-	210
CA-ST-12/6-V	850	650	540	330	-	-	30	318	-	328	346	-	210
CA-ST-15/7-H	1000	755	600	400	74	-	-	328	-	328	411	-	270
CA-ST-15/7-V	1000	755	600	400	-	-	30	378	-	383	411	-	270
CA-ST-18/9-H	1200	875	620	480	74	-	-	383	-	388	491	-	305
CA-ST-18/9-V	1200	875	620	480	-	-	30	433	-	448	491	-	305
CA-ST-20/10-H	1485	1175	730	565	175	120	-	475	530	440	613	605	343
CA-ST-20/10-V	1485	1175	730	565	-	-	75	535	-	585	613	-	343
CA-ST-22/11-H	1570	1250	760	615	165	110	-	510	565	470	708	700	373
CA-ST-22/11-V	1570	1250	760	615	-	-	75	570	-	640	708	-	373
CA-ST-25/13-H	1610	1375	820	685	175	120	-	550	605	495	803	795	423
CA-ST-25/13-V	1610	1375	820	685	-	-	75	625	-	705	803	-	423
CA-ST-30/14-H	1845	1600	855	820	160	95	-	655	710	580	943	935	488
CA-ST-30/14-V	1845	1600	855	820	-	-	75	760	-	825	943	-	488

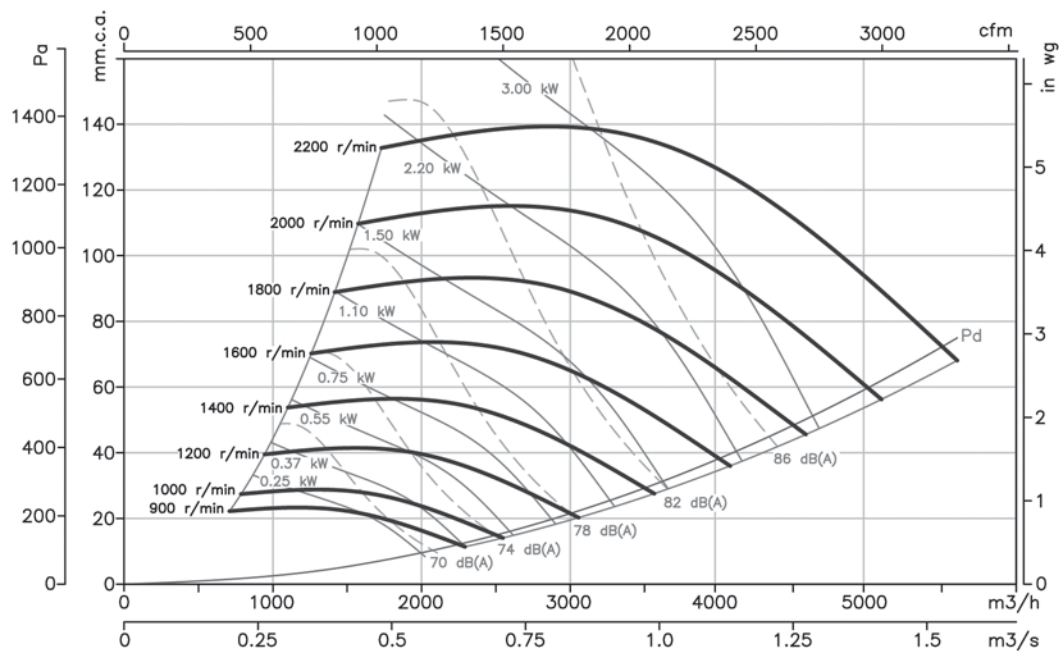
### Characteristic curves

Q = Airflow in m<sup>3</sup>/h, m<sup>3</sup>/s and cfm.  
 Pe = Static pressure in mm.w.c., Pa and in wg.

#### 9/4

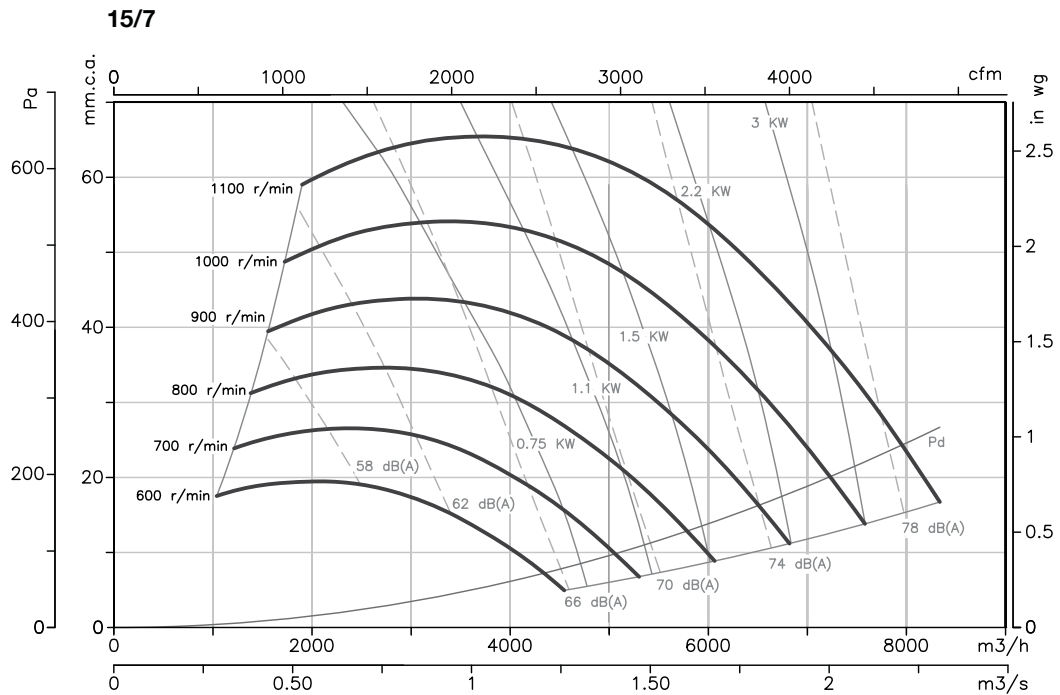
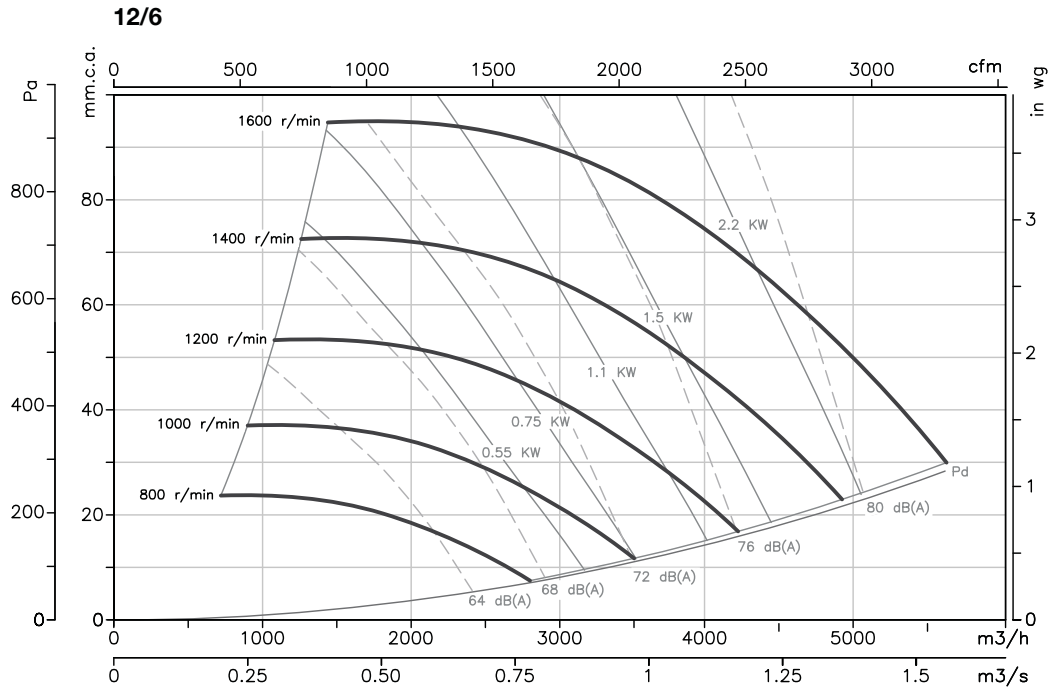


#### 10/5



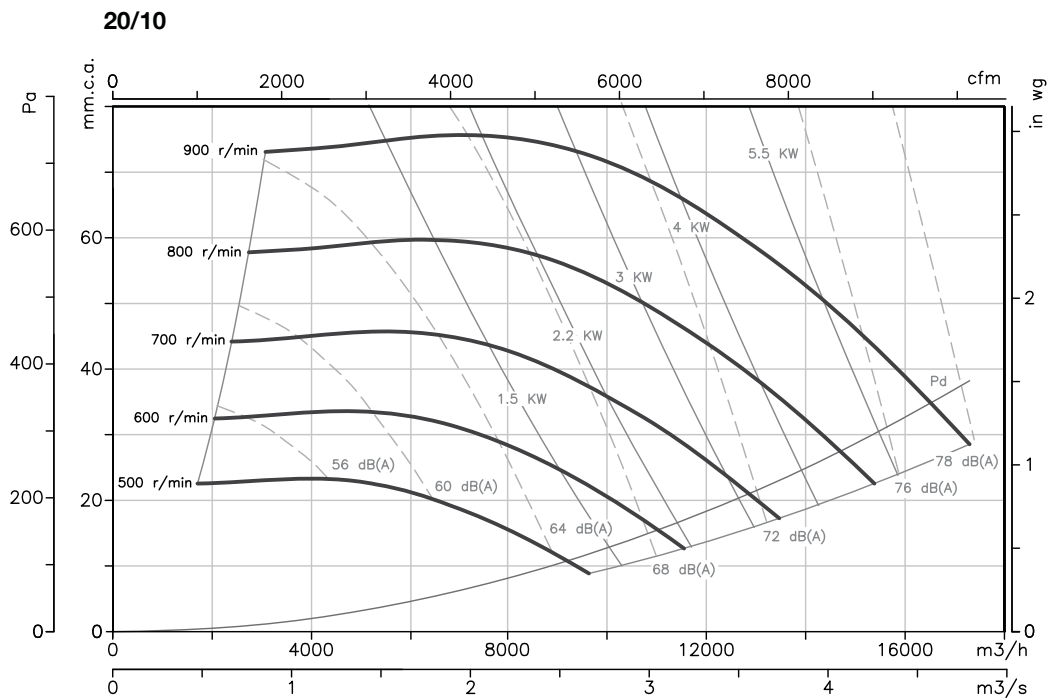
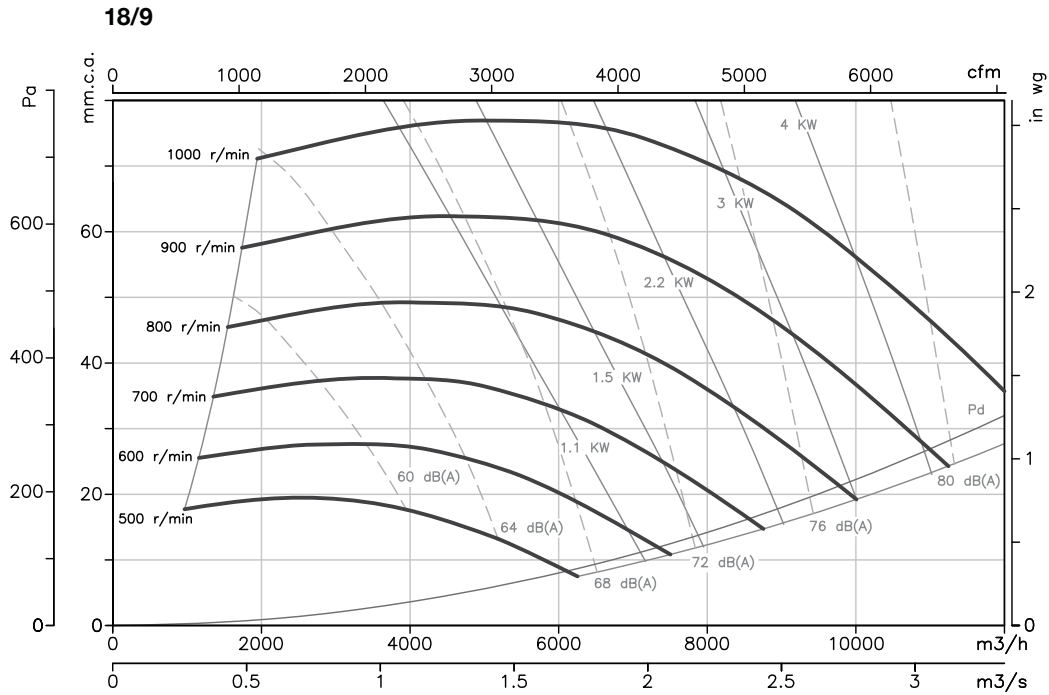
### Characteristic curves

Q = Airflow in m<sup>3</sup>/h, m<sup>3</sup>/s and cfm.  
 Pe = Static pressure in mm.w.c., Pa and in wg.



### Characteristic curves

Q = Airflow in m<sup>3</sup>/h, m<sup>3</sup>/s and cfm.  
 Pe = Static pressure in mm.w.c., Pa and in wg.



DECORATIVE FANS

WALL MOUNTED FANS

DUCT FANS

DIDW FANS

SISW FANS

ROOF TOP FANS

AXIAL IN LINE FANS

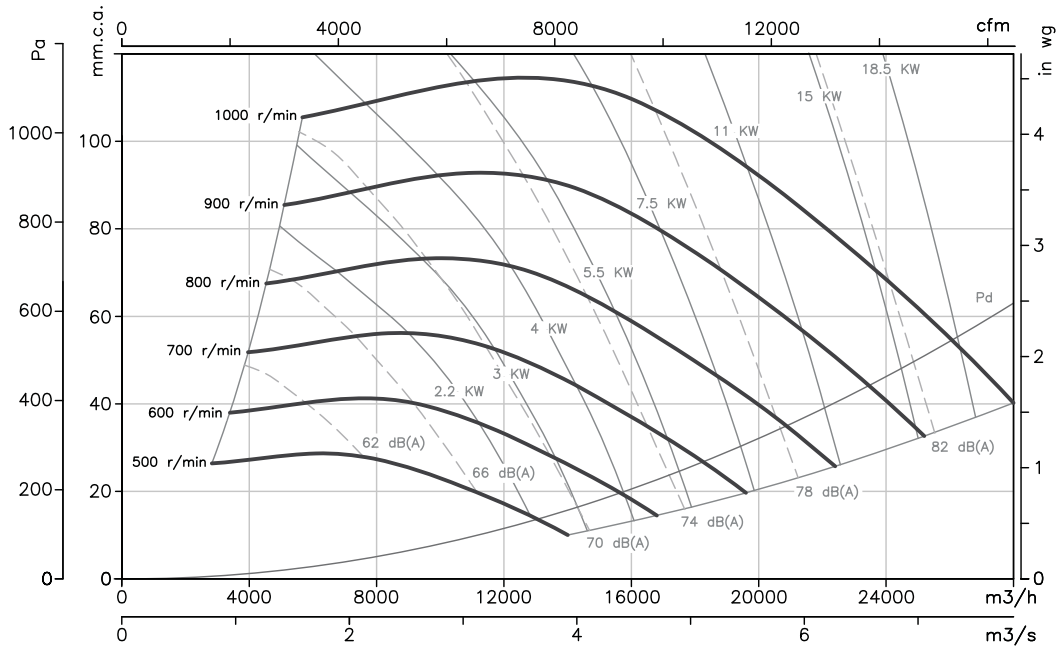
SOMKE FANS

ACCESSORIES

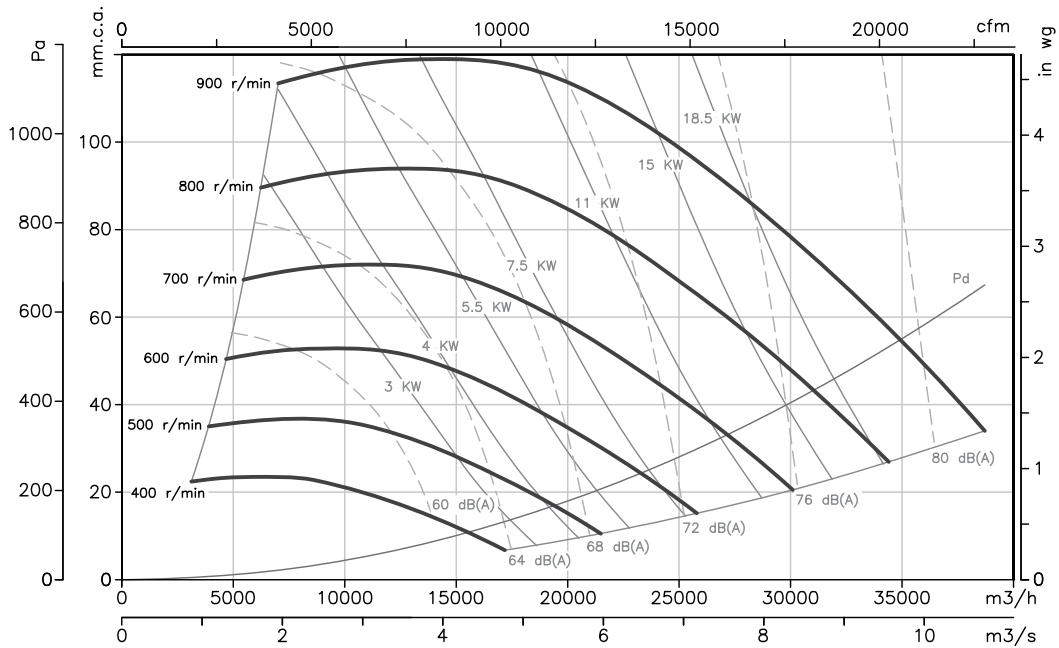


### Characteristic curves

Q = Airflow in m<sup>3</sup>/h, m<sup>3</sup>/s and cfm.  
 Pe = Static pressure in mm.w.c., Pa and in wg.

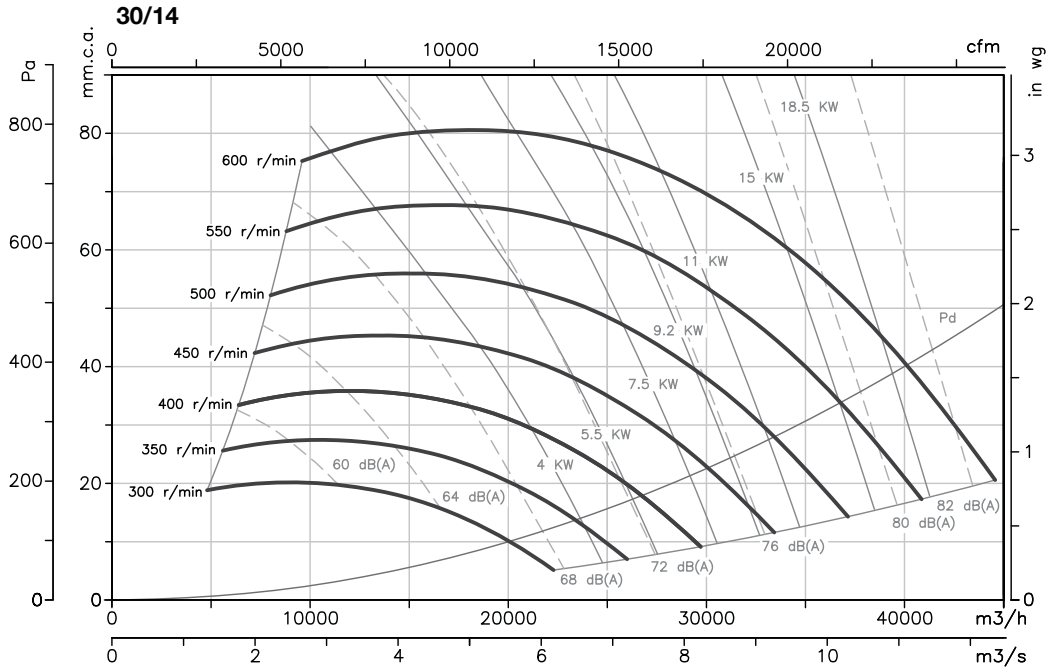


### 25/13



### Characteristic curves

Q = Airflow in m<sup>3</sup>/h, m<sup>3</sup>/s and cfm.  
 Pe = Static pressure in mm.w.c., Pa and in wg.



curves according to sisteven standard